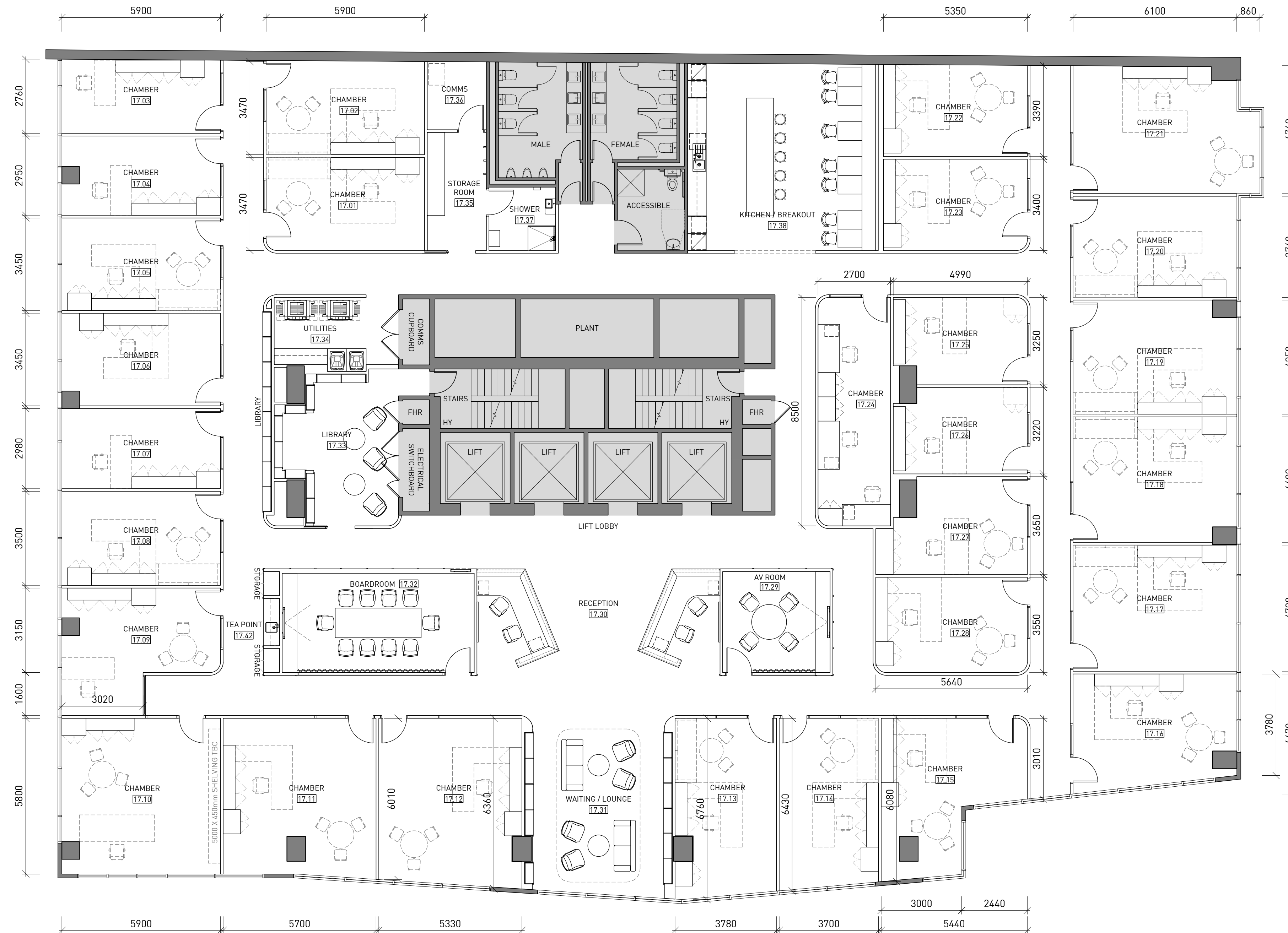


THIS DRAWING IS SUBJECT TO A SITE AUDIT  
ALL DIMENSIONS ARE NOMINAL



ALL FURNITURE IS INDICATIVE ONLY AND TO BE SUPPLIED BY BCL.  
ALL CHAMBER JOINERY IS INDICATIVE ONLY AND TO BE SUPPLIED BY BCL.

AREA	COUNT
CHAMBERS	28
SHARED CHAMBERS	0
RECEPTION	2 (2P)
WAITING AREA	1
BOARDROOM (10P)	1
MEETING ROOMS (6P)	1
CONSULTATION ROOM	1
KITCHEN/BREAKOUT	1
LIBRARY	1
UTILITY	1
COMMS ROOM	1
LOCKERS	1
NET LETTABLE AREA (APPROX. TBC)	1,150 m <sup>2</sup>
No. STAFF	58
NLA/STAFF	20 m <sup>2</sup>



incorp melbourne  
the hub  
level 2, 696 bourke st  
melbourne vic 3000 australia  
t 03 9257 8800  
www.incorp.solutions  
sydney melbourne brisbane perth  
san francisco seattle dubai

CHAMBER NUMBER	SQM
17.01	20.4 m <sup>2</sup>
17.02	20.6 m <sup>2</sup>
17.03	16.2 m <sup>2</sup>
17.04	17.0 m <sup>2</sup>
17.05	20.4 m <sup>2</sup>
17.06	20.0 m <sup>2</sup>
17.07	17.6 m <sup>2</sup>
17.08	20.7 m <sup>2</sup>
17.09	23.0 m <sup>2</sup>
17.10	33.8 m <sup>2</sup>
17.11	32.7 m <sup>2</sup>
17.12	32.6 m <sup>2</sup>
17.13	24.3 m <sup>2</sup>
17.14	23.2 m <sup>2</sup>
17.15	24.8 m <sup>2</sup>
17.16	24.6 m <sup>2</sup>
17.17	28.7 m <sup>2</sup>
17.18	28.0 m <sup>2</sup>
17.19	25.3 m <sup>2</sup>
17.20	23.0 m <sup>2</sup>
17.21	31.0 m <sup>2</sup>
17.22	18.2 m <sup>2</sup>
17.23	18.2 m <sup>2</sup>
17.24	22.9 m <sup>2</sup>
17.25	15.6 m <sup>2</sup>
17.26	15.6 m <sup>2</sup>
17.27	18.0 m <sup>2</sup>
17.28	20.0 m <sup>2</sup>

copyright  
these drawings and design concepts remain the property of incorp property solutions group pty ltd and may not be reproduced whole or in part without the expressed permission of incorp.

note: all site measurements and services shall be checked prior to fabrication and/or construction. incorp shall be notified of any discrepancies on site. do not scale dimensions directly from drawings.

the contractor is to verify existing site conditions. the contractor is to check fixings to existing substrates prior to commencing work. the contractor is to install materials on site to manufacturer's recommendation. the contractor is to co-ordinate with all other trades on site. if any notation or dimensioning is unclear or conflicting, the contractor must first clarify with incorp before pricing, manufacturing or installing.

issue	rev	description	date
A		ISSUED FOR TENDER	24.01.20
B		ISSUED FOR LAYOUT REVIEW	28.01.20
C		ISSUED FOR INFORMATION	11.02.20
D		ISSUED FOR LAYOUT APPROVAL	13.02.20
E		ISSUED FOR TENDER	26.02.20
F		REVISIONS ISSUED FOR APPROVAL	12.03.20
	1	SLIDING DOOR DELETED DUT TO PRINTER SIZE INCREASE	
	2	LOCKABLE STORAGE CUPBOARDS ADDED	
	3	CHAMBER LAYOUT AND JOINERY REVISED	
G		ISSUED FOR INFORMATION	16.03.20
H		ISSUED FOR INFORMATION	17.03.20

**FOR INFORMATION**  
SIGNED: \_\_\_\_\_  
DATE: \_\_\_\_\_

sheet status: **INFORMATION**

scale: 1:100 @ A1 date: 23.01.2020

design: CJ drawn: CJ

project no: **M20-0009**

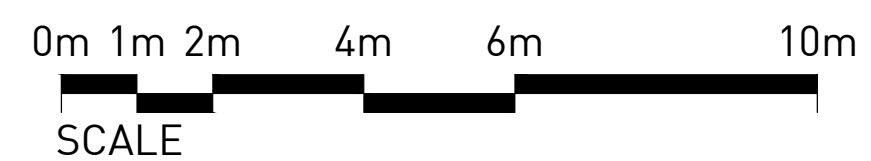
client: BARRISTERS' CHAMBERS LIMITED



site: LEVEL 16 & 17  
460 LONSDALE STREET  
MELBOURNE VIC 3000

drawing title: LEVEL 17 (GROUP FLOOR)  
GENERAL ARRANGEMENT PLAN

drawing no: **A17-0.1** issue: **H**



LONSDALE STREET