

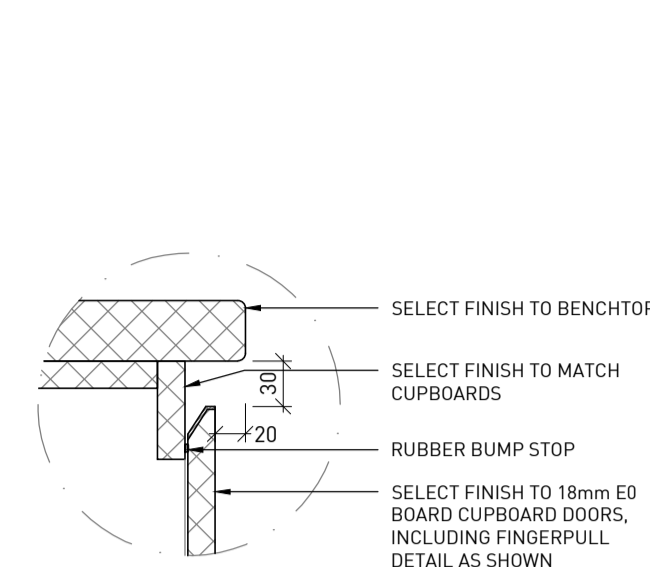
VARIOUS FINISH OPTIONS FOR JOINERY REFER TO VARIOUS FINISH OPTIONS FOR JOINERY AND FINISHES SCHEDULE	
TIMBER LOOK LAMINATE	
L1 - FLORENTINE WALNUT	WALNUT
L6 - NATURAL OAK	OAK
L2 - SOFT WALNUT	WHITWASH
TIMBER VENEER	
TB3 - WALNUT	WALNUT
TB4 - OAK	OAK
TB5 - VIBRANT OAK COOL WHITE	WHITWASH

JOINERY LEGEND:

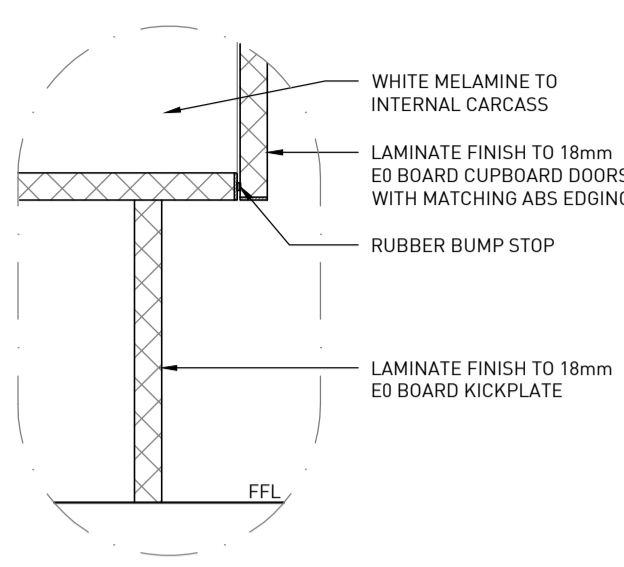
- AA FINISH SYMBOL. REFER TO FINISHES SCHEDULE FOR CODE SPECIFICATION
- AA FITTING, FIXTURE & EQUIPMENT SYMBOL. REFER TO FFE SCHEDULE FOR CODE SPECIFICATION
- DOUBLE GPO & SINGLE GPO
- SINGLE DATA & DOUBLE DATA
- SINGLE USB & DOUBLE USB
- SYMBOL INDICATES FINISH PATTERN/GRAIN DIRECTION

JOINERY NOTES:

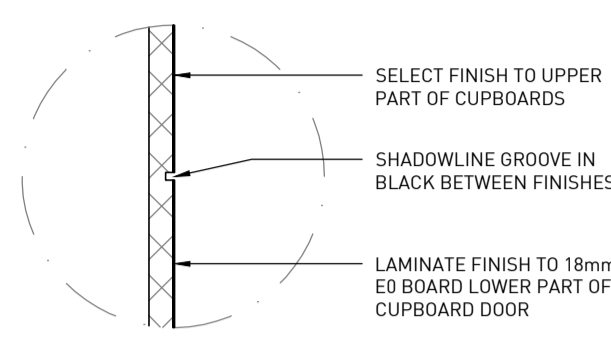
- REFER TO FINISHES & FFE SCHEDULE FOR ALL CODE SPECIFICATIONS
- DOORS & CARCASS OF MIN. 18mm ED BOARD - FRONTS AND EDGES IN SPECIFIED LAMINATE FINISH. HIGH MOISTURE RESISTANT ED BOARD TO BE USED IN WET AREAS
- ALL EXPOSED EDGES (UNLESS OTHERWISE NOTED) ARE TO BE ABS EDGING. NOTE: CODE INDICATED ON DETAILS TO EDGES INDICATES LAMINATE COLOUR TO BE MATCHED IN ABS EDGING NOT SHELF EDGED LAMINATE
- ALL JOINERY SHALL BE FINISHED EXTERNALLY AS NOTED ON DRAWINGS & INTERNALLY IN WHITE MELAMINE APPLIED TO ED SUBSTRATE UNLESS OTHERWISE NOTED
- JOINER AND BUILDER TO CO-ORDINATE ALL WORKS WITH CONSULTANTS PRIOR TO COMMENCEMENT AND DURING WORKS. ANY DISCREPANCIES TO BE BROUGHT TO INCORP'S ATTENTION FOR EVALUATION & CLARIFICATION/ALTERATION WHERE REQUIRED
- GIVEN VERTICAL DIMENSIONS TO FLOOR ARE TAKEN FROM FFL (FINISHED FLOOR LEVEL)
- BUILDER TO PATCH & PAINT WHERE REQUIRED.
- FOR ALL ELECTRICAL SPECIFICATIONS PLEASE REFER TO ELECTRICAL DRAWINGS



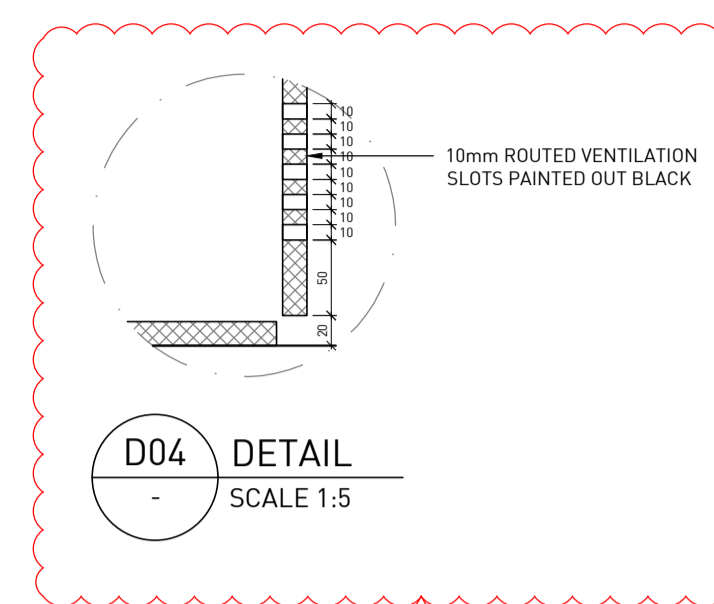
D01 DETAIL
SCALE 1:5



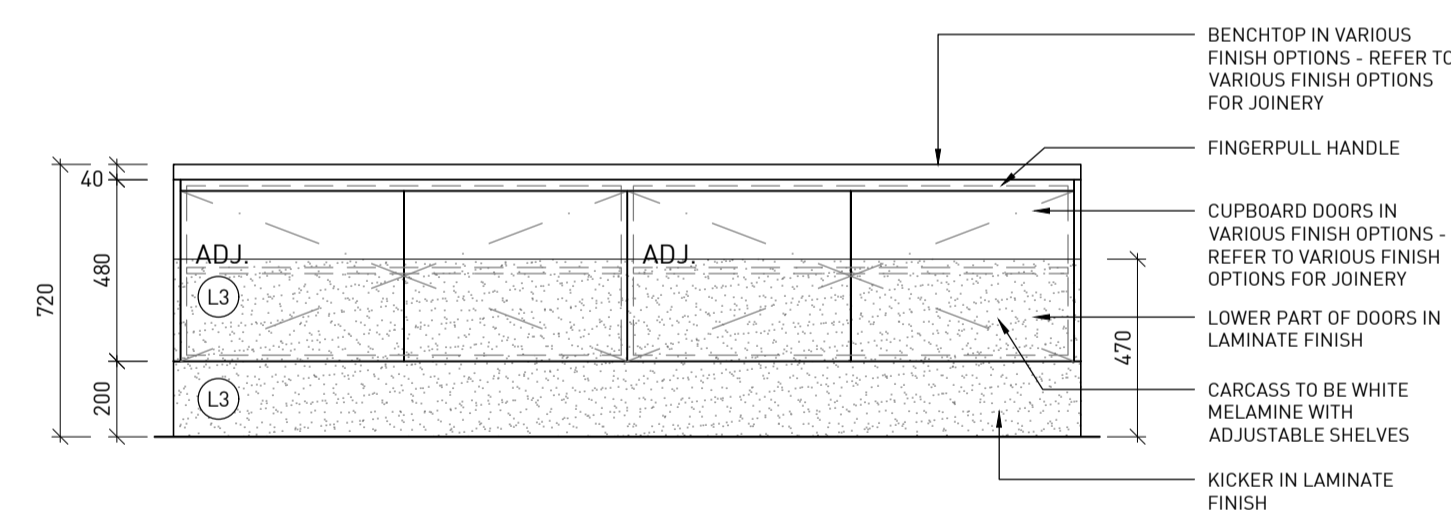
D02 DETAIL
SCALE 1:5



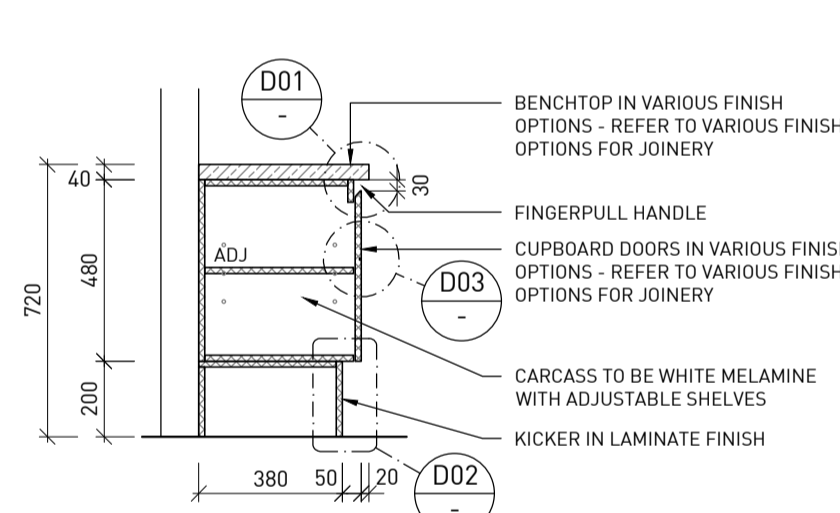
D03 DETAIL
SCALE 1:5



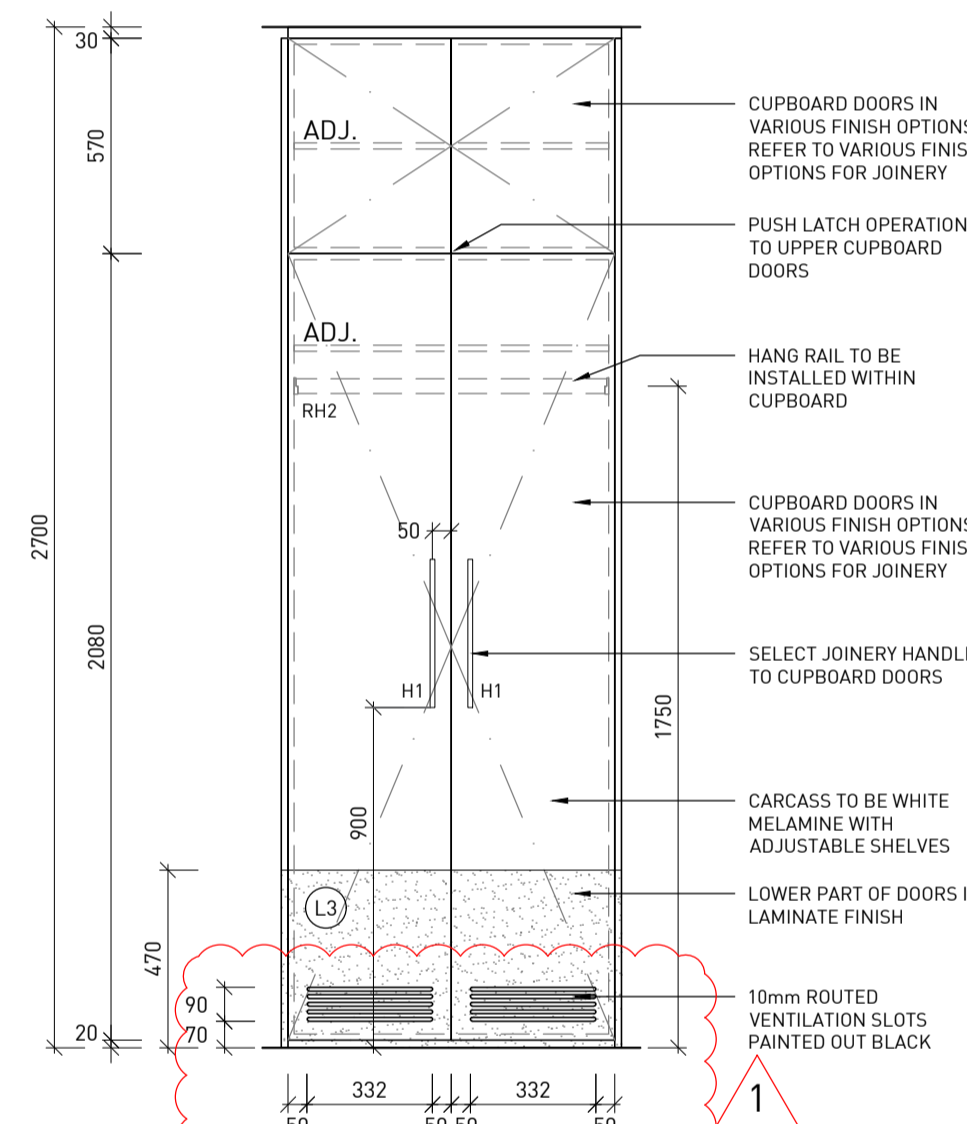
D04 DETAIL
SCALE 1:5



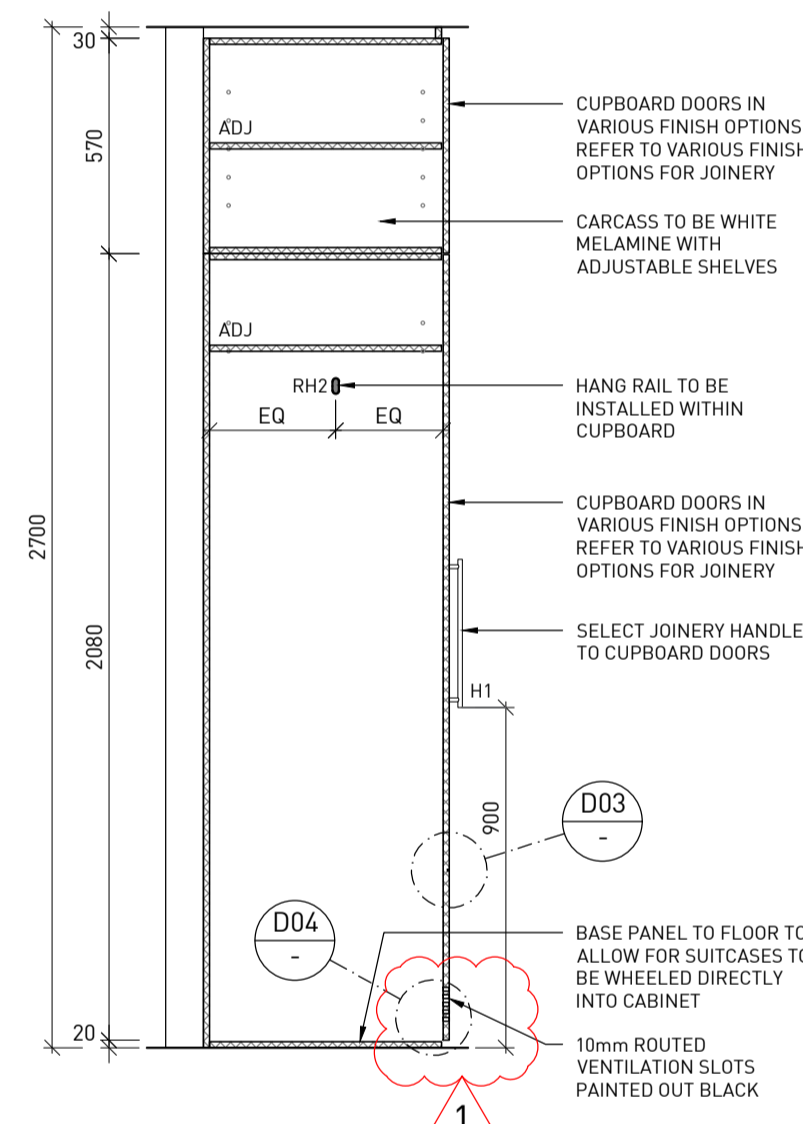
A CHAMBER - CREDENZA
SCALE 1:20 ELEVATION



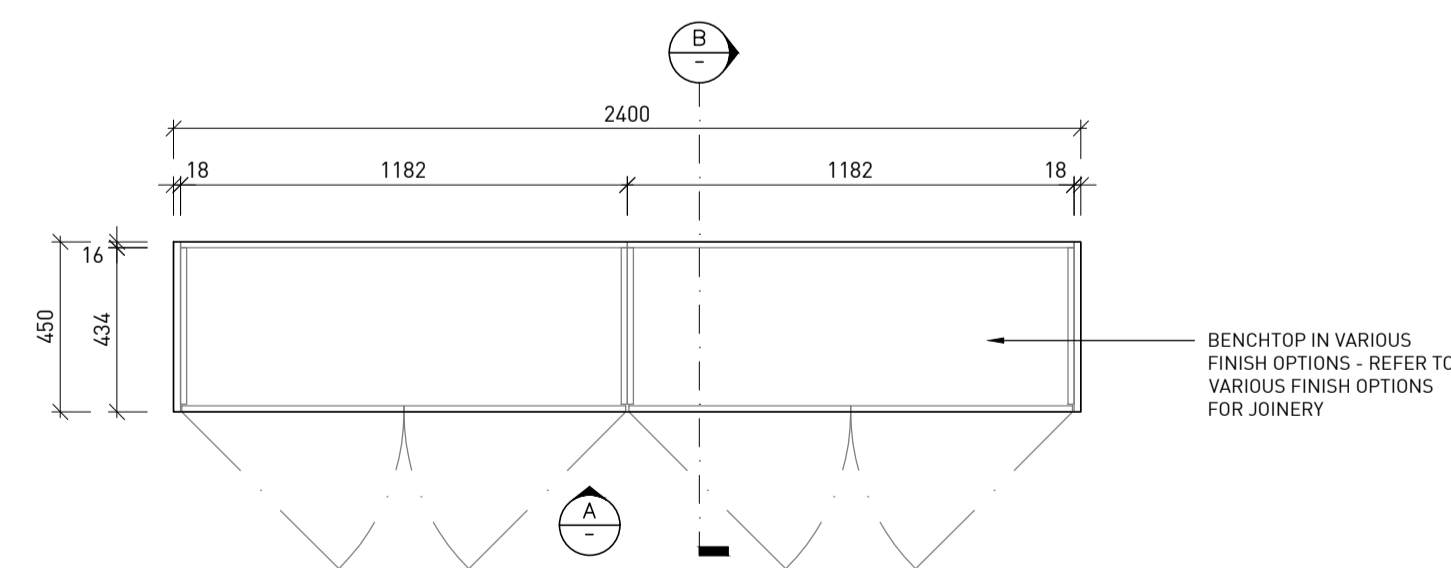
B CHAMBER - CREDENZA
SCALE 1:20 SECTION



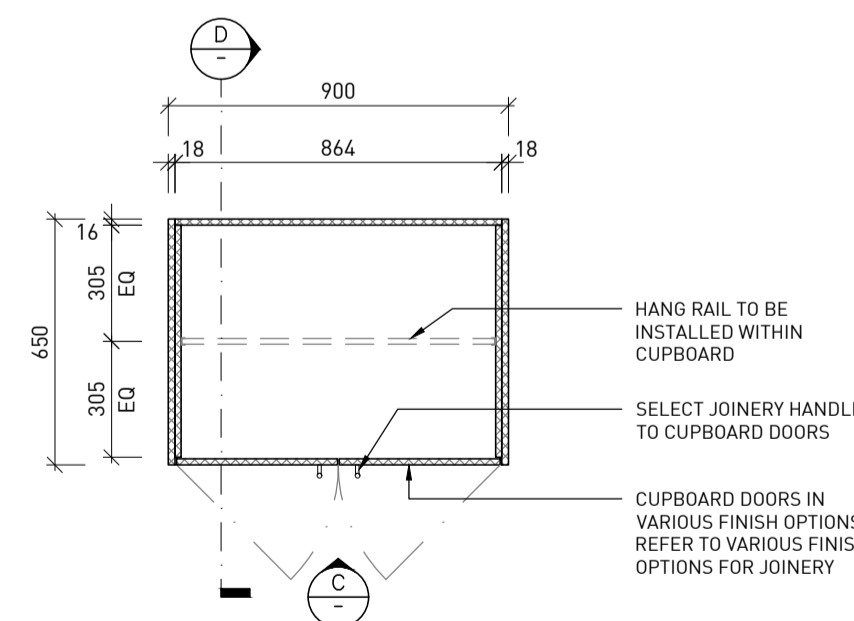
C CHAMBER - WARDROBE CUPBOARD
SCALE 1:20 ELEVATION



D CHAMBER - WARDROBE CUPBOARD
SCALE 1:20 SECTION



C1 CHAMBER - CREDENZA
SCALE 1:20 PLAN



C2 CHAMBER - WARDROBE CUPBOARD
SCALE 1:20 PLAN

**CONTRACTOR TO
SUPPLY SHOP
DRAWINGS**

issue	rev	description	date
A		ISSUED FOR TENDER	03.02.20

sheet status: **TENDER**

scale: VARY @ A1 date: 31.01.2020

design: CJ drawn: CJ

project no: **M20-0009**

client: **BARRISTERS' CHAMBERS LIMITED**



site: LEVEL 16 & 17
460 LONSDALE STREET
MELBOURNE VIC 3000

drawing title: CHAMBER
C03 & C04 JOINERY DETAILS

drawing no: **A0-10.2** issue: **A**

JOINERY LEGEND:

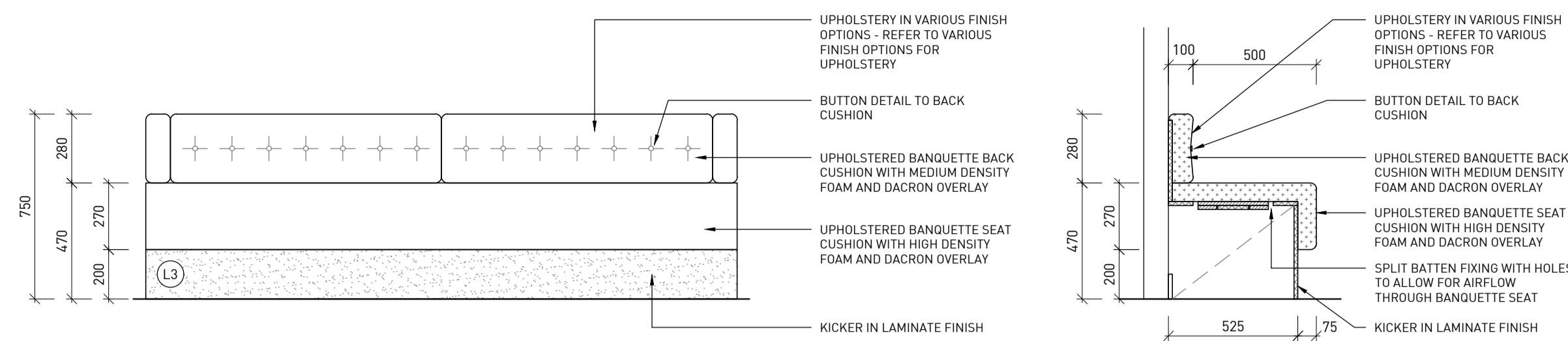
- AA FINISH SYMBOL. REFER TO FINISHES SCHEDULE FOR CODE SPECIFICATION
- AA FITTING, FIXTURE & EQUIPMENT SYMBOL. REFER TO FFE SCHEDULE FOR CODE SPECIFICATION
- DOUBLE GPO
- SINGLE GPO
- SINGLE DATA
- DOUBLE DATA
- SINGLE USB
- DOUBLE USB
- SYMBOL INDICATES FINISH PATTERN/GRAIN DIRECTION

JOINERY NOTES:

1. REFER TO FINISHES & FFE SCHEDULE FOR ALL CODE SPECIFICATIONS
2. DOORS & CARCASS OF MIN. 18mm ED BOARD - FRONTS AND EDGES IN SPECIFIED LAMINATE FINISH. HIGH MOISTURE RESISTANT ED BOARD TO BE USED IN WET AREAS
3. ALL EXPOSED EDGES (UNLESS OTHERWISE NOTED) ARE TO BE ABS EDGING. NOTE: CODE INDICATED ON DETAILS TO EDGES INDICATES LAMINATE COLOUR TO BE MATCHED IN ABS EDGING NOT SHELF-EDGED LAMINATE
4. ALL JOINERY SHALL BE FINISHED EXTERNALLY AS NOTED ON DRAWINGS & INTERNALLY IN WHITE MELAMINE APPLIED TO EO SUBSTRATE UNLESS OTHERWISE NOTED
5. JOINER AND BUILDER TO CO-ORDINATE ALL WORKS WITH CONSULTANTS PRIOR TO COMMENCEMENT AND DURING WORKS. ANY DISCREPANCIES TO BE BROUGHT TO INCORP'S ATTENTION FOR EVALUATION & CLARIFICATION/ALTERATION WHERE REQUIRED
6. GIVEN VERTICAL DIMENSIONS TO FLOOR ARE TAKEN FROM FFL (FINISHED FLOOR LEVEL)
7. BUILDER TO PATCH & PAINT WHERE REQUIRED.
8. FOR ALL ELECTRICAL SPECIFICATIONS PLEASE REFER TO ELECTRICAL DRAWINGS

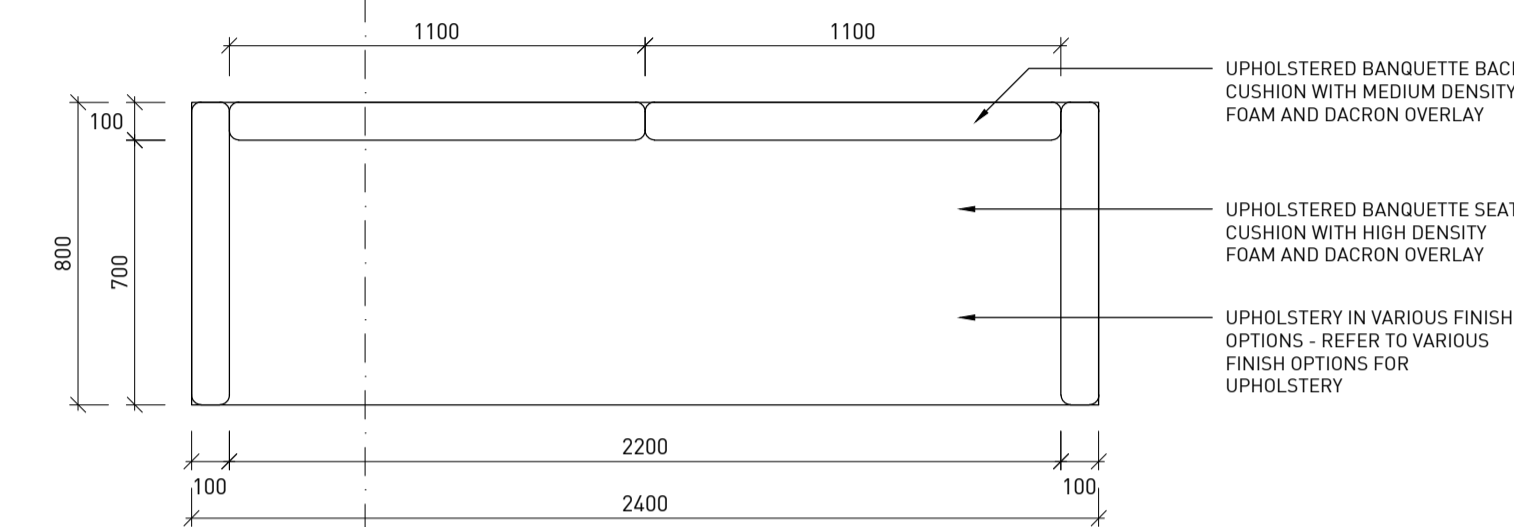
VARIOUS FINISH OPTIONS FOR JOINERY REFER TO VARIOUS FINISH OPTIONS FOR JOINERY AND FINISHES SCHEDULE	
TIMBER LOOK LAMINATE	
L1 - FLORENTINE WALNUT	WALNUT
L6 - NATURAL OAK	OAK
L2 - SOFT WALNUT	WHITWASH
TIMBER VENEER	
TB3 - WALNUT	WALNUT
TB4 - OAK	OAK
TB5 - VIBRANT OAK COOL WHITE	WHITWASH

VARIOUS FINISH OPTIONS FOR UPHOLSTERY REFER TO VARIOUS FINISH OPTIONS FOR JOINERY AND FINISHES SCHEDULE	
VINYL	
F2 - ZONE EQUATOR	WALNUT
F4 - ZONE URBAN	OAK
F3 - ZONE BUILDING	WHITWASH
FABRIC	
F8 - FEEL ZEN	WALNUT
F10 - FEEL RESPECTED	OAK
F9 - SYNERGY SERENDIPITY	WHITWASH
LEATHER	
F5 - STUDIO HAWTHORN	WALNUT
F7 - STUDIO SLATE	OAK
F6 - STUDIO ACORN	WHITWASH

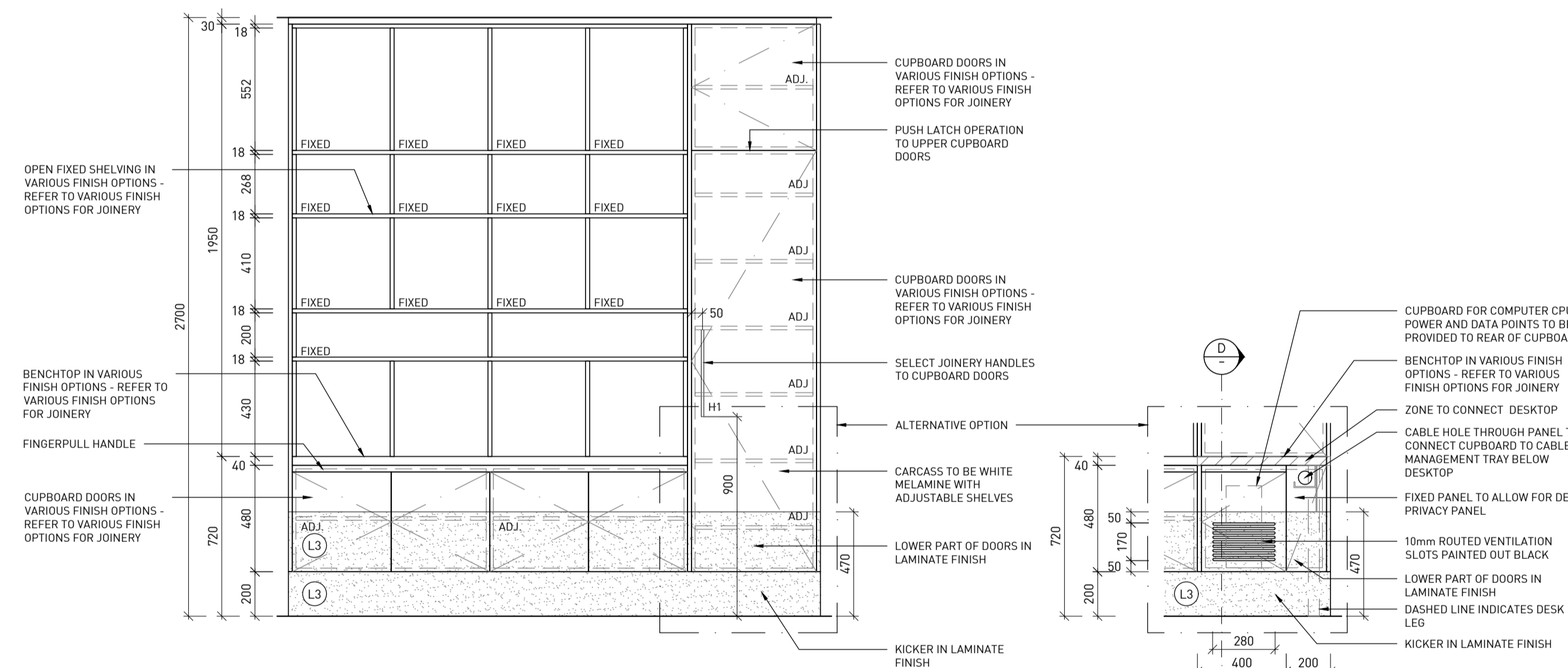


E CHAMBER - BANQUETTE SOFA
SCALE 1:20 ELEVATION

F CHAMBER - BANQUETTE SOFA
SCALE 1:20 SECTION



C4 CHAMBER - BANQUETTE SOFA
SCALE 1:20 PLAN



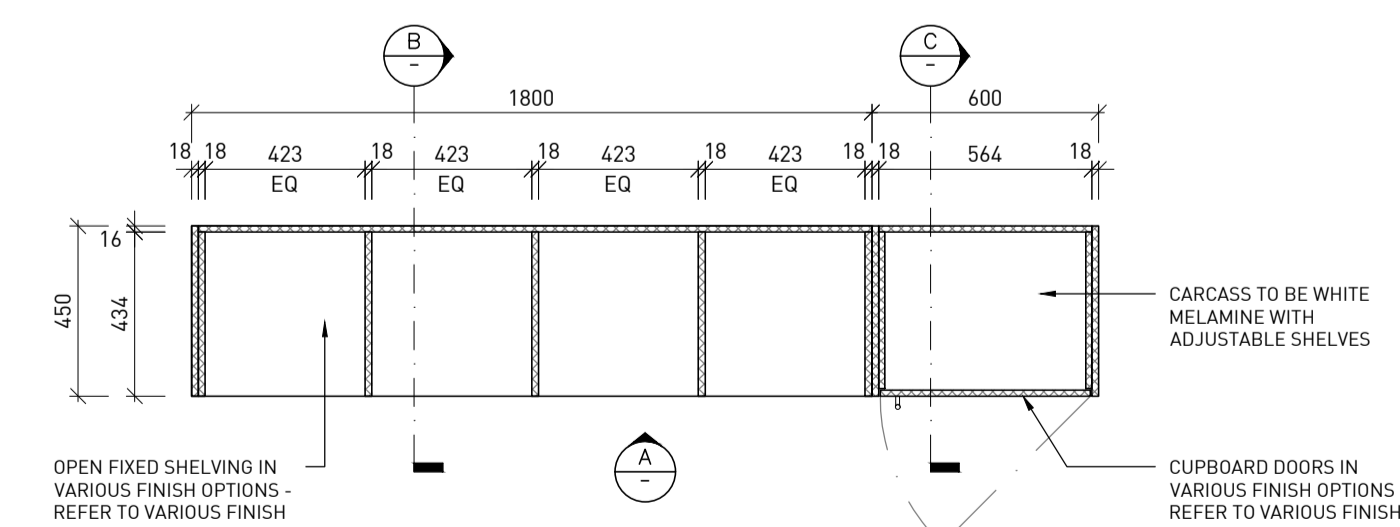
A CHAMBER - OPEN SHELVING & CUPBOARD
SCALE 1:20 ELEVATION

ALTERNATIVE END IF ATTACHING TO DESK
SCALE 1:20 ELEVATION

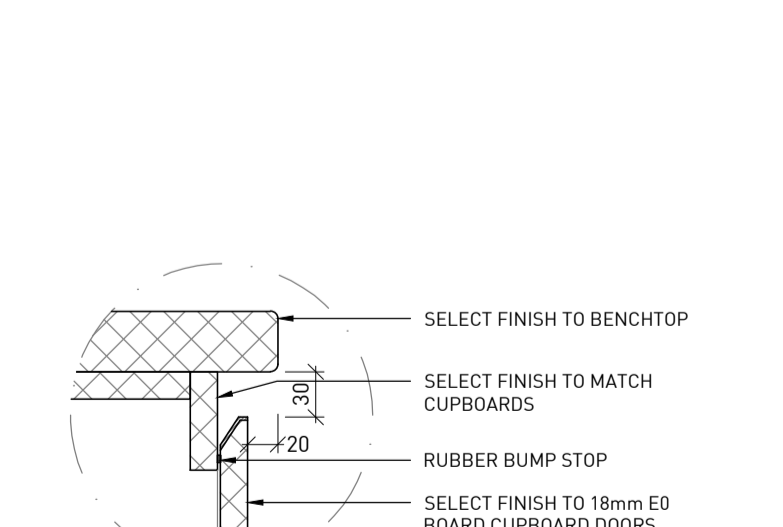
B CHAMBER - OPEN SHELVING
SCALE 1:20 SECTION

C CHAMBER - CUPBOARD
SCALE 1:20 SECTION

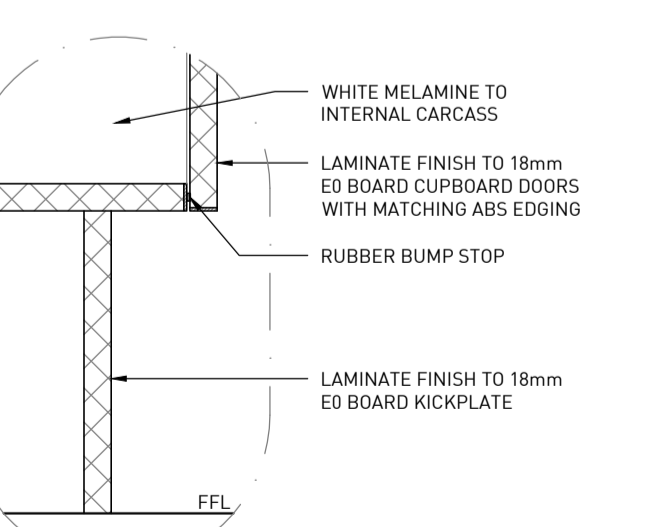
D CHAMBER - CUPBOARD
SCALE 1:20 SECTION



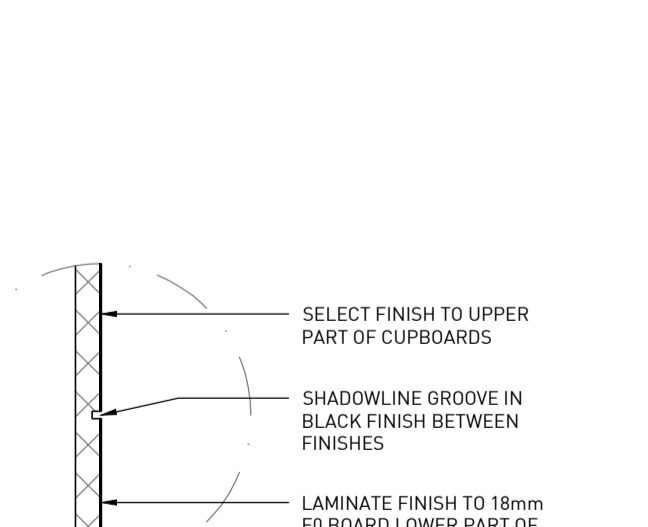
C3 CHAMBER - OPEN SHELVING & CUPBOARD
SCALE 1:20 PLAN



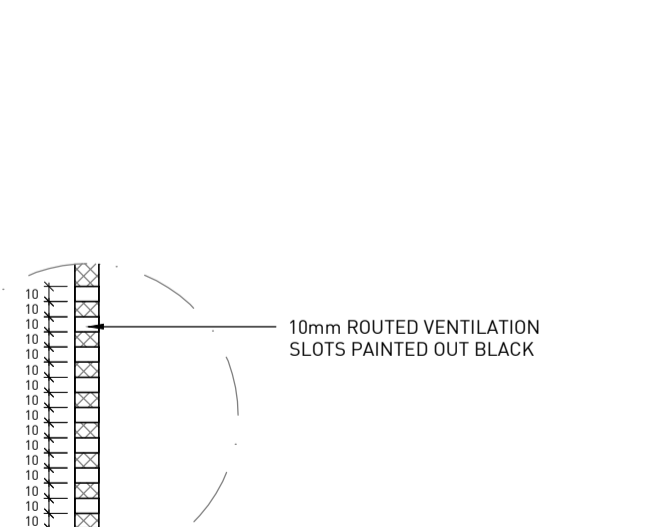
D01 DETAIL
SCALE 1:5



D02 DETAIL
SCALE 1:5



D03 DETAIL
SCALE 1:5



D04 DETAIL
SCALE 1:5

CONTRACTOR TO SUPPLY SHOP DRAWINGS

issue	rev	description	date
A		ISSUED FOR TENDER	03.02.20

sheet status: **TENDER**

scale: VARY @ A1 date: 31.01.2020

design: CJ drawn: CJ

project no: **M20-0009**

client: BARRISTERS' CHAMBERS LIMITED



site: LEVEL 16 & 17
460 LONSDALE STREET
MELBOURNE VIC 3000

drawing title: CHAMBER C05 & C06 JOINERY DETAILS

drawing no: A0-10.3 issue: A

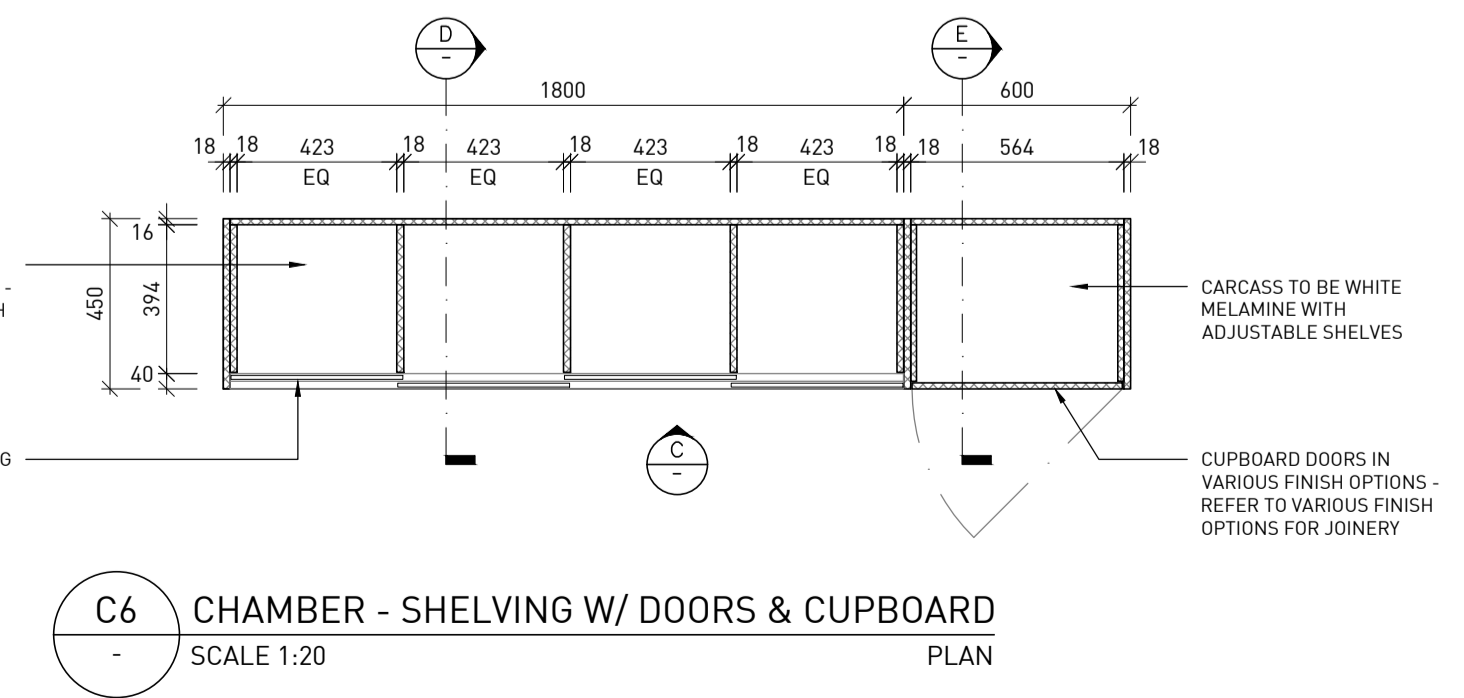
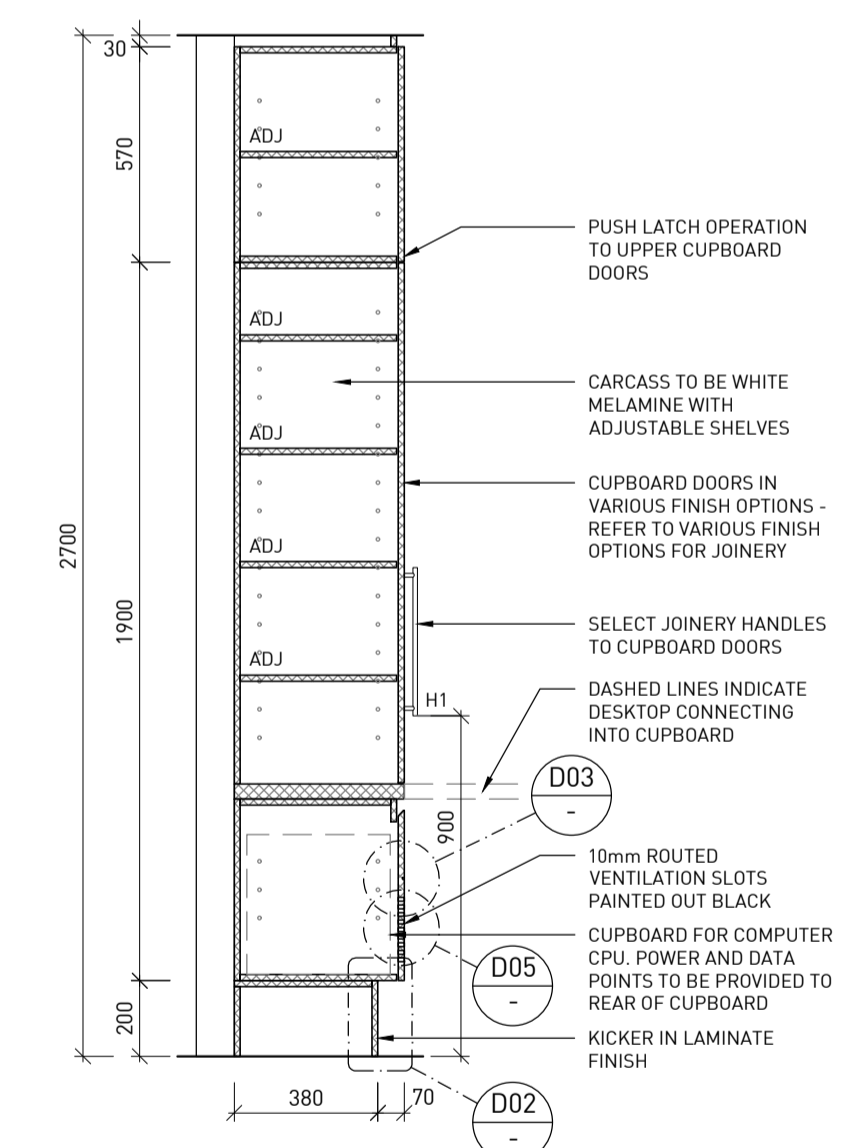
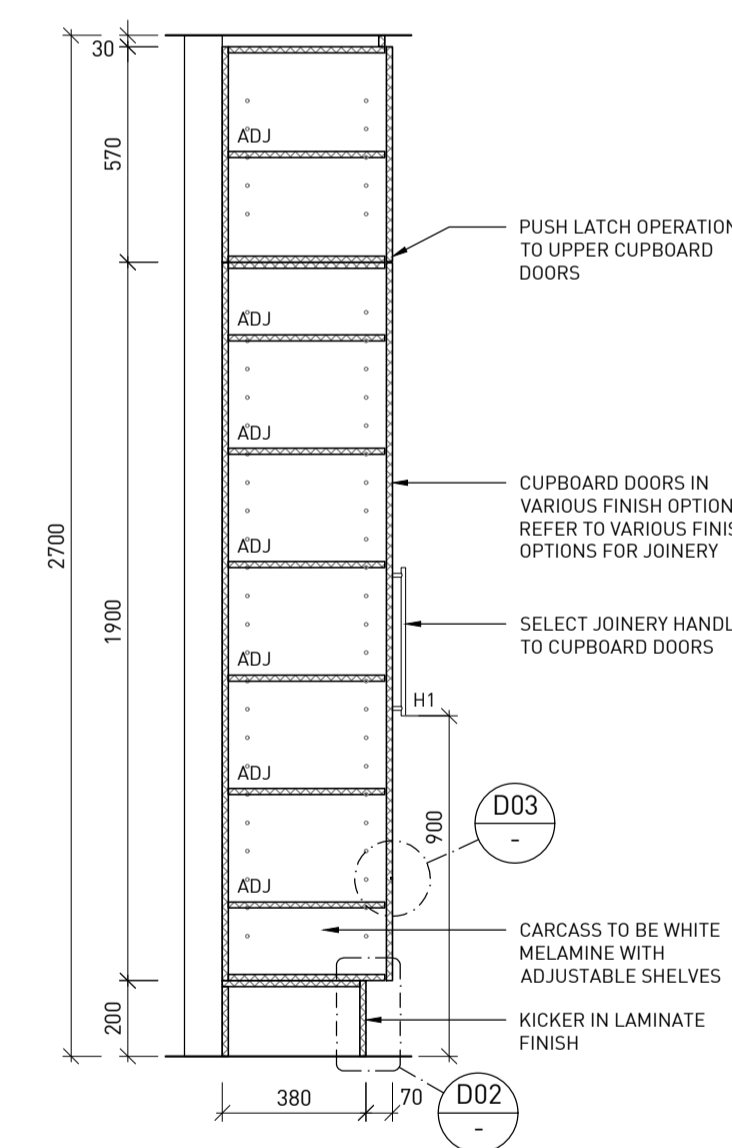
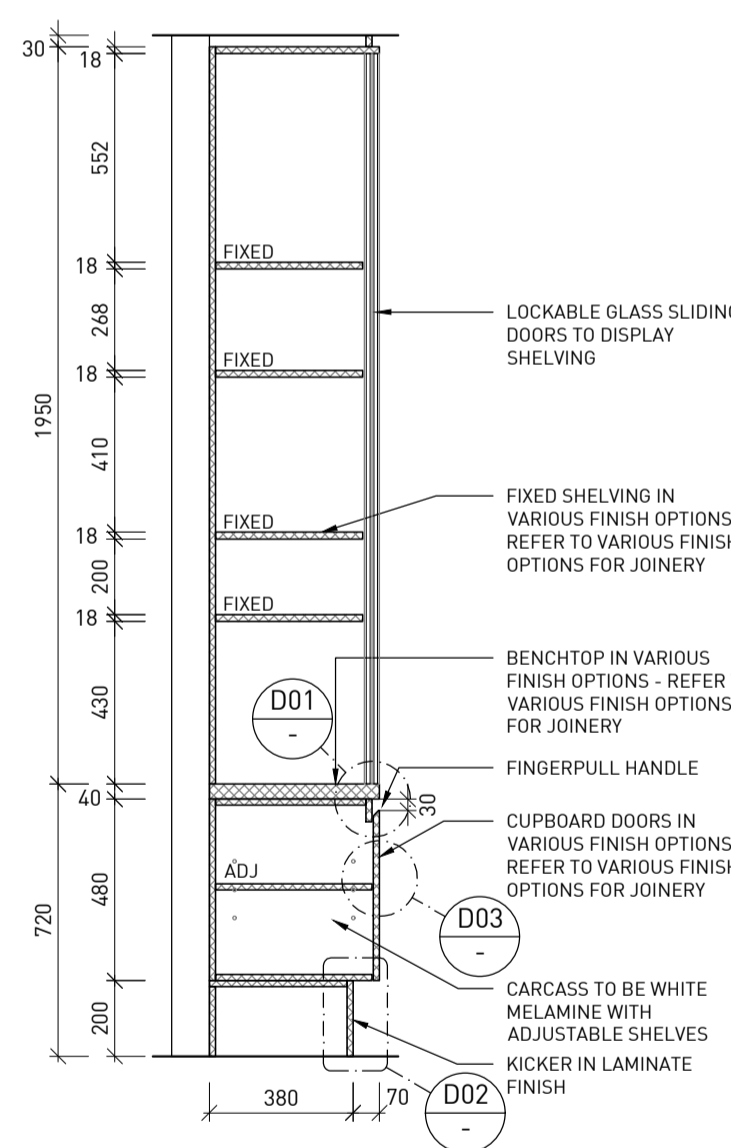
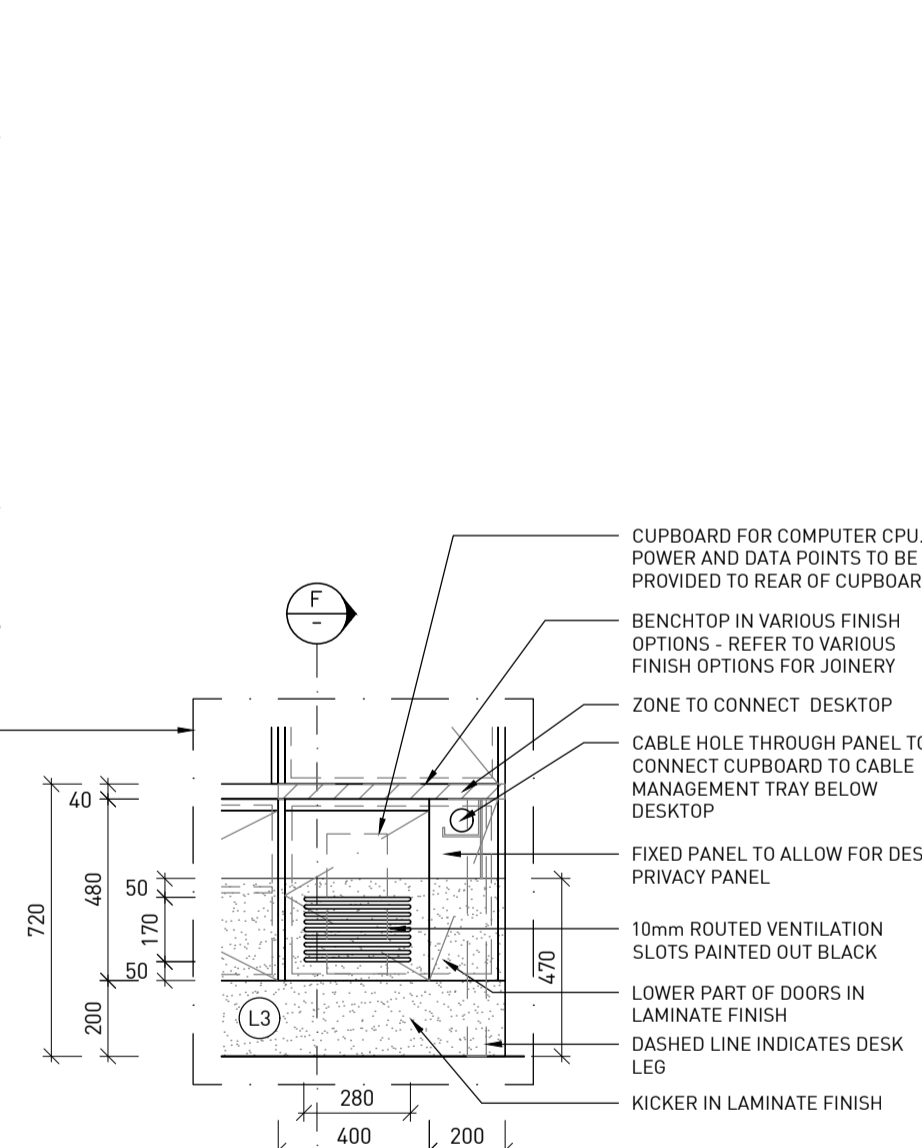
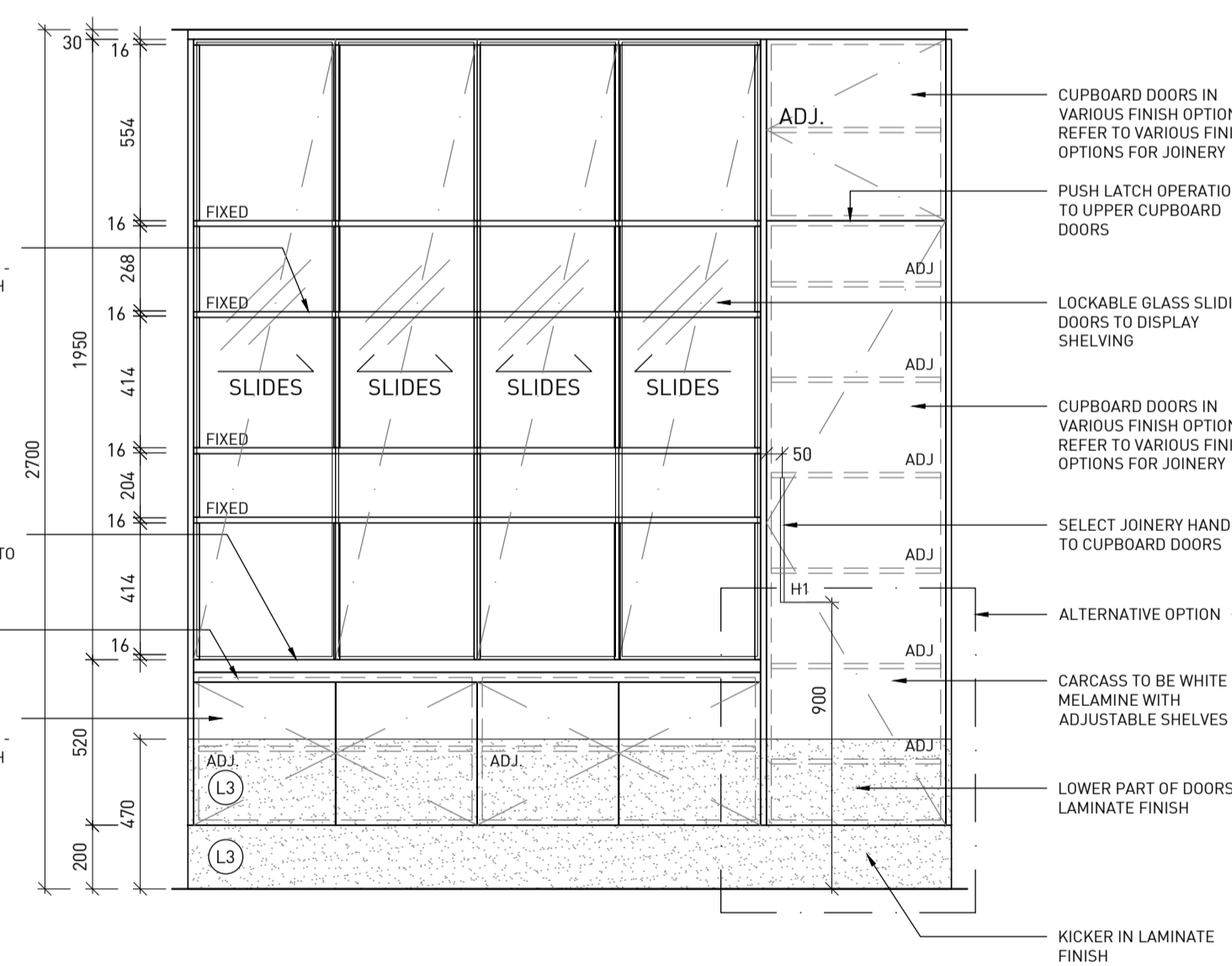
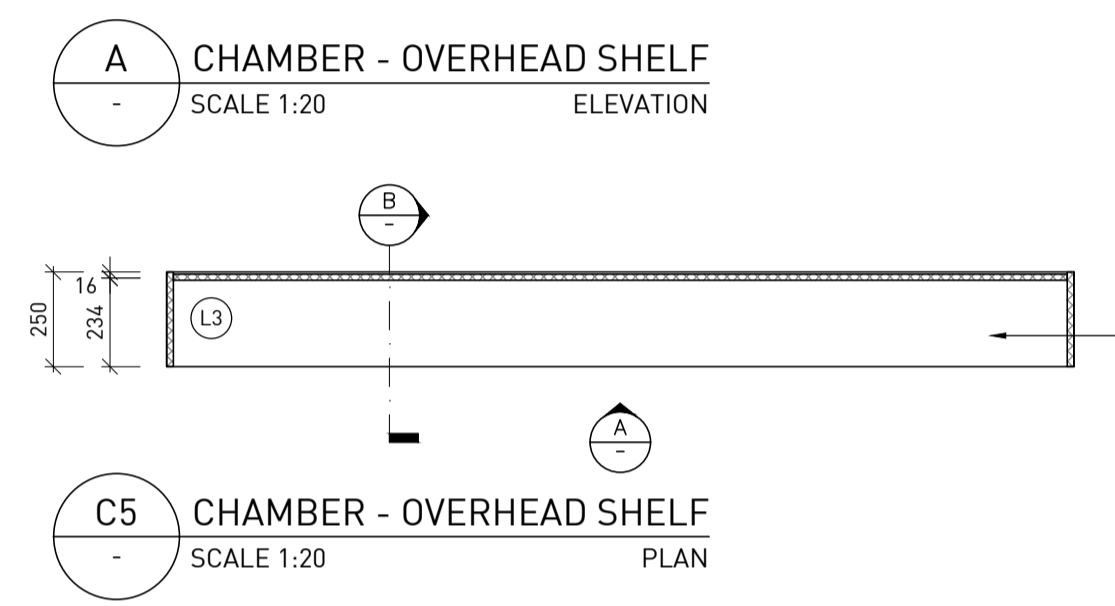
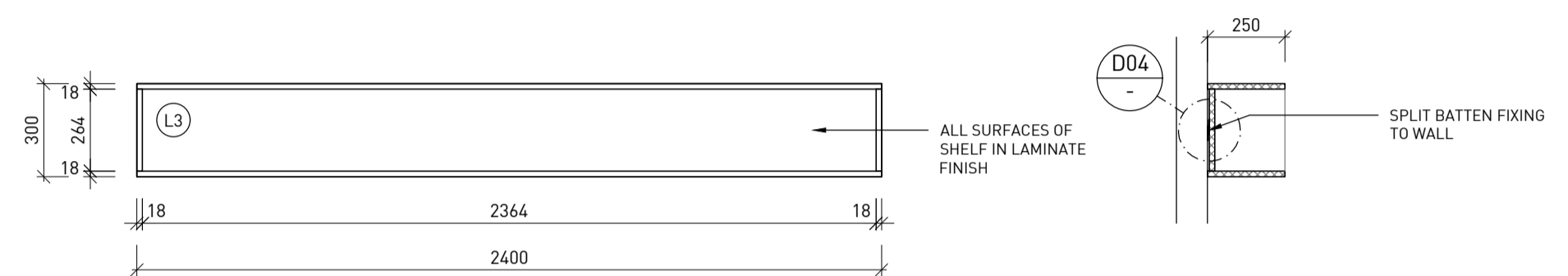
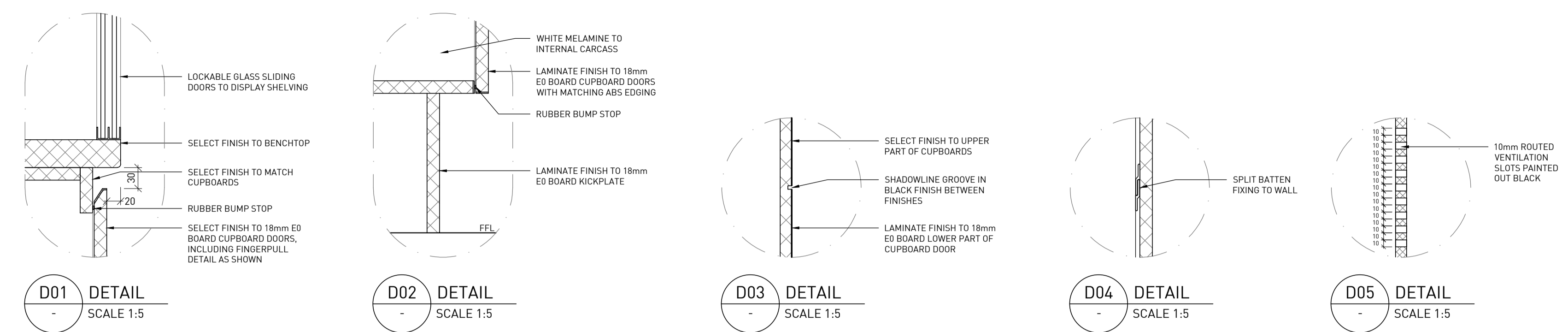
JOINERY LEGEND:

- AA FINISH SYMBOL. REFER TO FINISHES SCHEDULE FOR CODE SPECIFICATION
- AA FITTING, FIXTURE & EQUIPMENT SYMBOL. REFER TO FFE SCHEDULE FOR CODE SPECIFICATION
- DOUBLE GPO
- SINGLE GPO
- SINGLE DATA
- DOUBLE DATA
- SINGLE USB
- DOUBLE USB

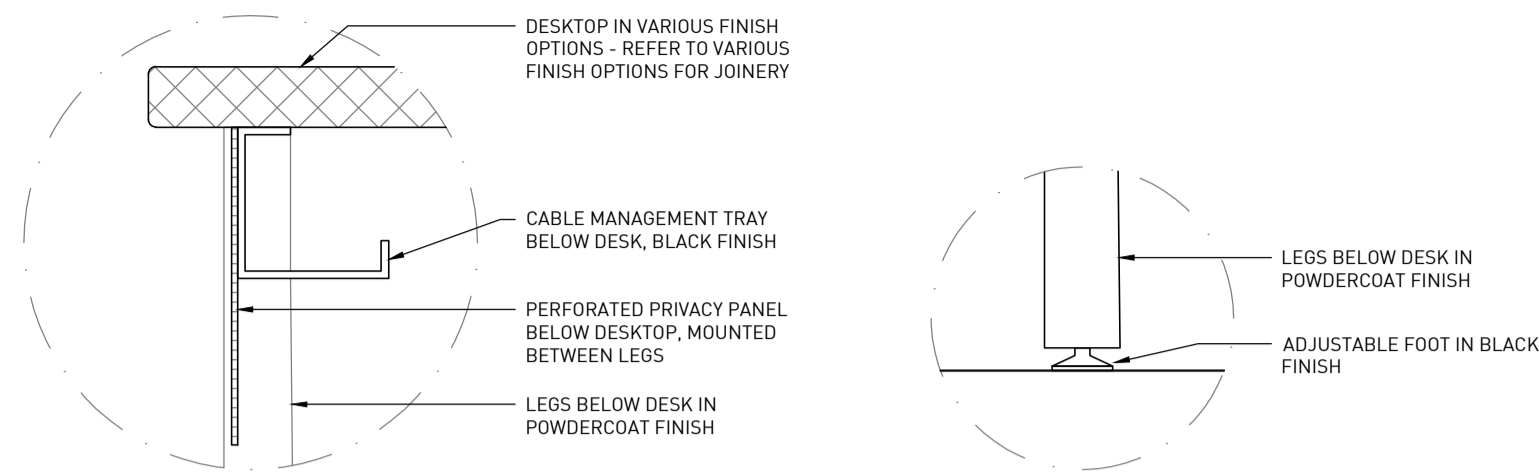
JOINERY NOTES:

- REFER TO FINISHES & FFE SCHEDULE FOR ALL CODE SPECIFICATIONS
- DOORS & CARCASS OF MIN. 18mm E0 BOARD - FRONTS AND EDGES IN SPECIFIED LAMINATE FINISH. HIGH MOISTURE RESISTANT E0 BOARD TO BE USED IN WET AREAS
- ALL EXPOSED EDGES (UNLESS OTHERWISE NOTED) ARE TO BE ABS EDGING. NOTE: CODE INDICATED ON DETAILS TO EDGES INDICATES LAMINATE COLOUR TO BE MATCHED IN ABS EDGING NOT SHELF-EDGED LAMINATE
- ALL JOINERY SHALL BE FINISHED EXTERNALLY AS NOTED ON DRAWINGS & INTERNALLY IN WHITE MELAMINE APPLIED TO E0 SUBSTRATE UNLESS OTHERWISE NOTED
- JOINER AND BUILDER TO CO-ORDINATE ALL WORKS WITH CONSULTANTS PRIOR TO COMMENCEMENT AND DURING WORKS. ANY DISCREPANCIES TO BE BROUGHT TO INCORP'S ATTENTION FOR EVALUATION & CLARIFICATION/ALTERATION WHERE REQUIRED
- GIVEN VERTICAL DIMENSIONS TO FLOOR ARE TAKEN FROM FFL (FINISHED FLOOR LEVEL)
- BUILDER TO PATCH & PAINT WHERE REQUIRED.
- FOR ALL ELECTRICAL SPECIFICATIONS PLEASE REFER TO ELECTRICAL DRAWINGS

VARIOUS FINISH OPTIONS FOR JOINERY REFER TO VARIOUS FINISH OPTIONS FOR JOINERY AND FINISHES SCHEDULE	
TIMBER LOOK LAMINATE	
L1 - FLORENTINE WALNUT	WALNUT
L6 - NATURAL OAK	OAK
L2 - SOFT WALNUT	WHITWASH
TIMBER VENEER	
TB3 - WALNUT	WALNUT
TB4 - OAK	OAK
TB5 - VIBRANT OAK COOL WHITE	WHITWASH



CONTRACTOR TO SUPPLY SHOP DRAWINGS



VARIOUS FINISH OPTIONS FOR JOINERY REFER TO VARIOUS FINISH OPTIONS FOR JOINERY AND FINISHES SCHEDULE	
TIMBER LOOK LAMINATE	
L1 - FLORENTINE WALNUT	WALNUT
L6 - NATURAL OAK	OAK
L2 - SOFT WALNUT	WHITWASH
TIMBER VENEER	
TB3 - WALNUT	WALNUT
TB4 - OAK	OAK
TB5 - VIBRANT OAK COOL WHITE	WHITWASH

- JOINERY LEGEND:**
- AA FINISH SYMBOL. REFER TO FINISHES SCHEDULE FOR CODE SPECIFICATION
 - AA FITTING, FIXTURE & EQUIPMENT SYMBOL. REFER TO FFE SCHEDULE FOR CODE SPECIFICATION
 - DOUBLE GPO & SINGLE GPO
 - SINGLE DATA & DOUBLE DATA
 - SINGLE USB & DOUBLE USB
 - SYMBOL INDICATES FINISH PATTERN/GRAIN DIRECTION

- JOINERY NOTES:**
- REFER TO FINISHES & FFE SCHEDULE FOR ALL CODE SPECIFICATIONS
 - DOORS & CARCASS OF MIN. 18mm EO BOARD - FRONTS AND EDGES IN SPECIFIED LAMINATE FINISH. HIGH MOISTURE RESISTANT EO BOARD TO BE USED IN WET AREAS
 - ALL EXPOSED EDGES (UNLESS OTHERWISE NOTED) ARE TO BE ABS EDGING. NOTE: CODE INDICATED ON DETAILS TO EDGES INDICATES LAMINATE COLOUR TO BE MATCHED IN ABS EDGING NOT SHELF-EDGED LAMINATE
 - ALL JOINERY SHALL BE FINISHED EXTERNALLY AS NOTED ON DRAWINGS & INTERNALLY IN WHITE MELAMINE APPLIED TO EO SUBSTRATE UNLESS OTHERWISE NOTED
 - JOINER AND BUILDER TO CO-ORDINATE ALL WORKS WITH CONSULTANTS PRIOR TO COMMENCEMENT AND DURING WORKS. ANY DISCREPANCIES TO BE BROUGHT TO INCORP'S ATTENTION FOR EVALUATION & CLARIFICATION/ALTERATION WHERE REQUIRED
 - GIVEN VERTICAL DIMENSIONS TO FLOOR ARE TAKEN FROM FFL (FINISHED FLOOR LEVEL)
 - BUILDER TO PATCH & PAINT WHERE REQUIRED.
 - FOR ALL ELECTRICAL SPECIFICATIONS PLEASE REFER TO ELECTRICAL DRAWINGS



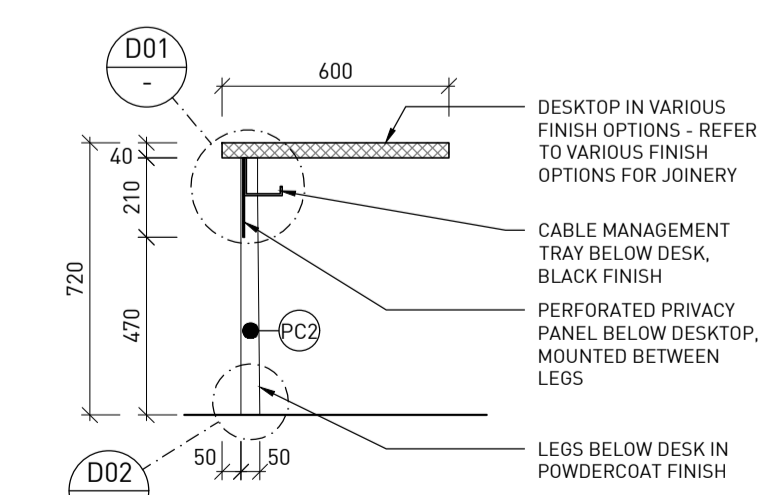
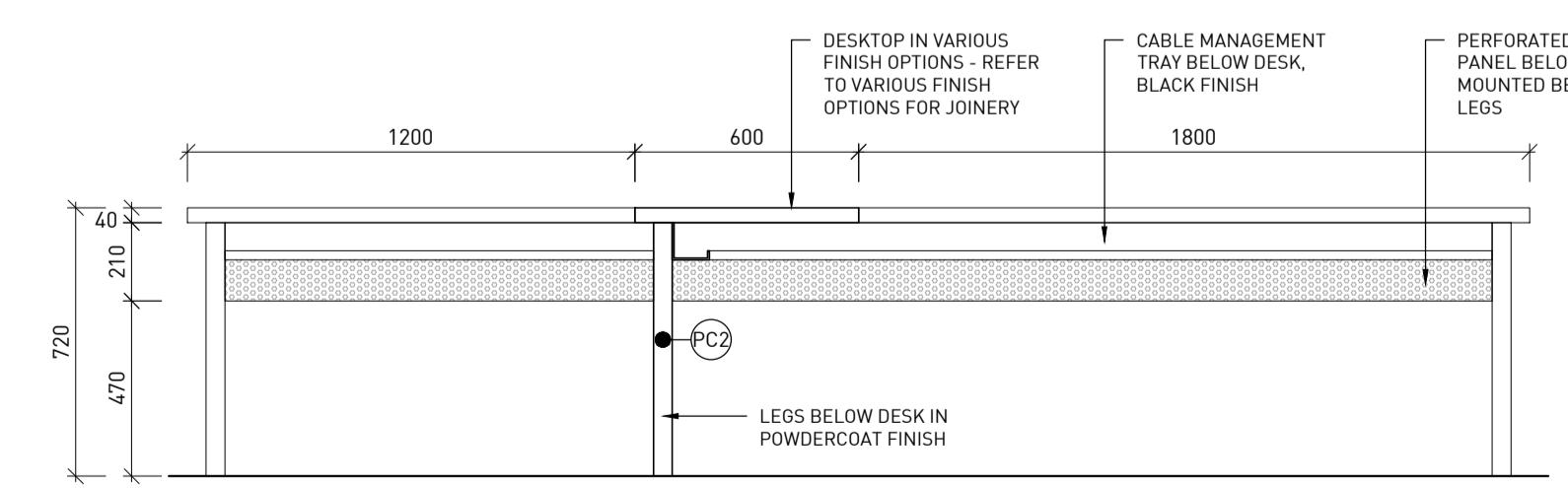
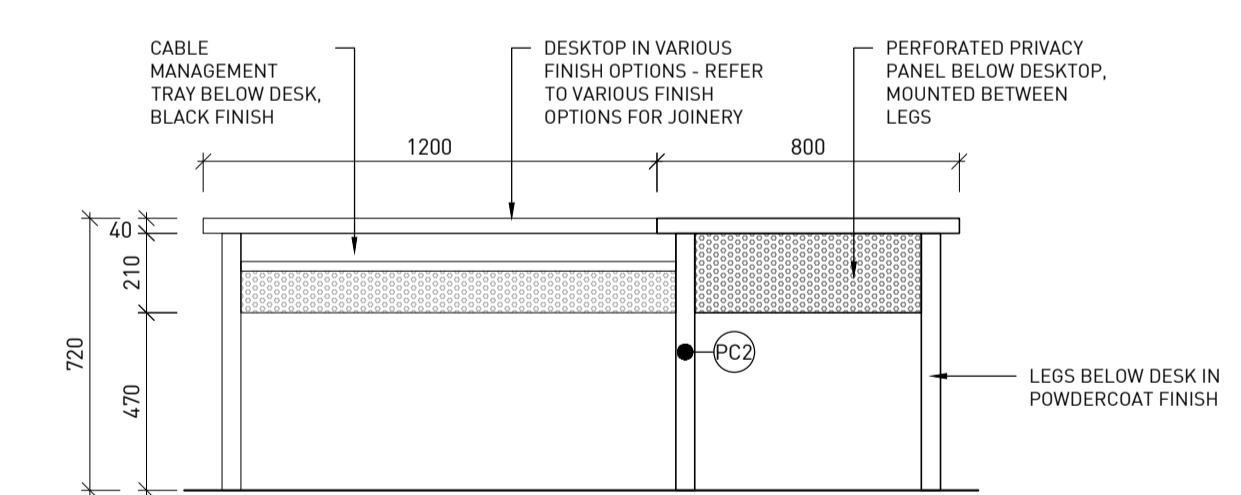
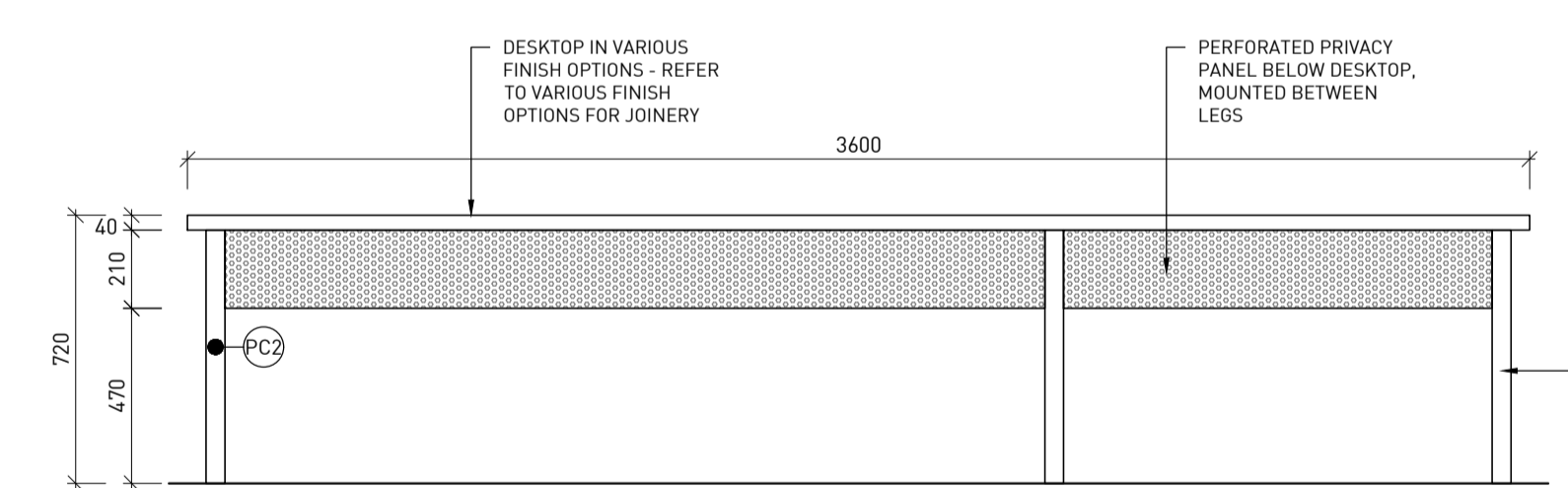
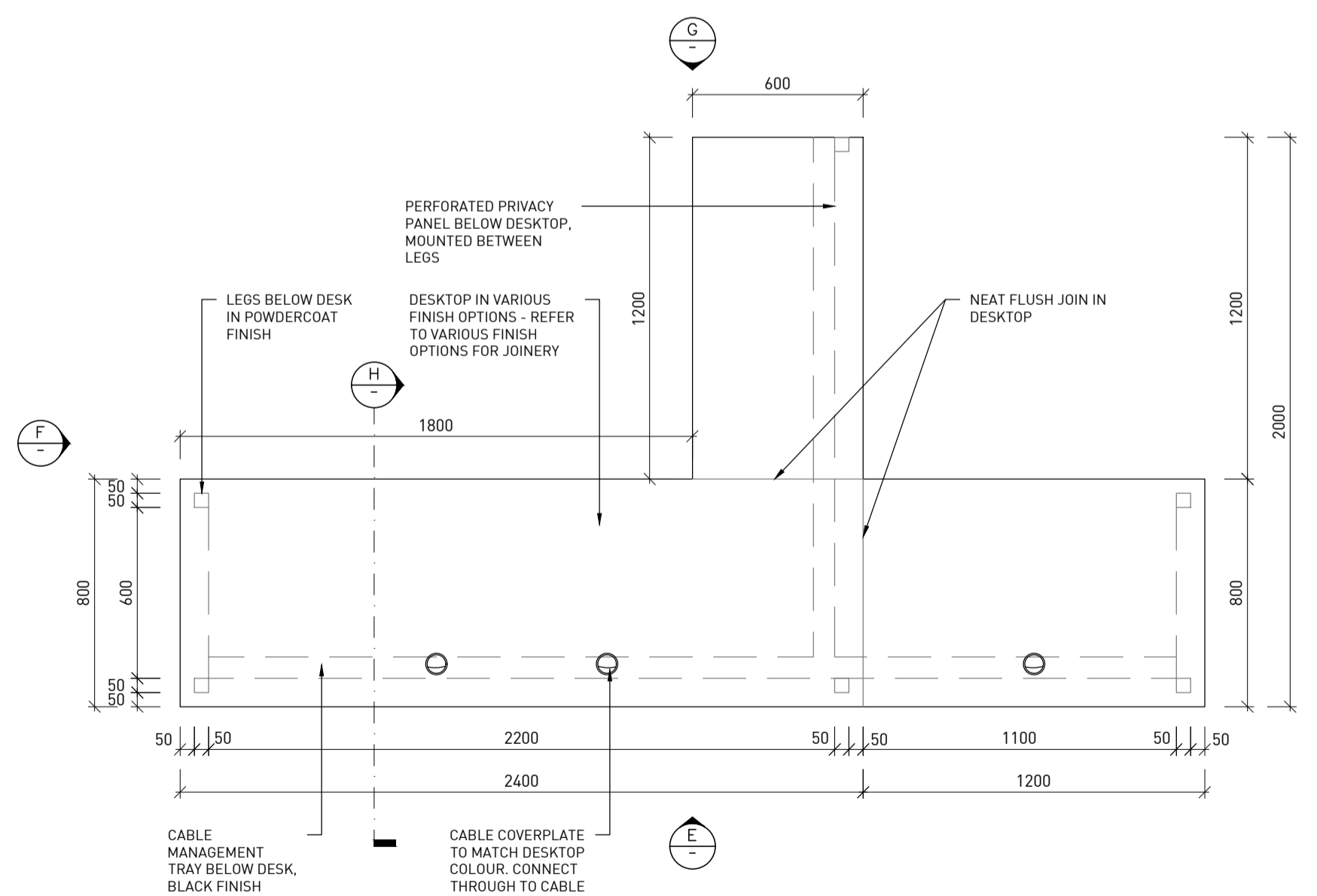
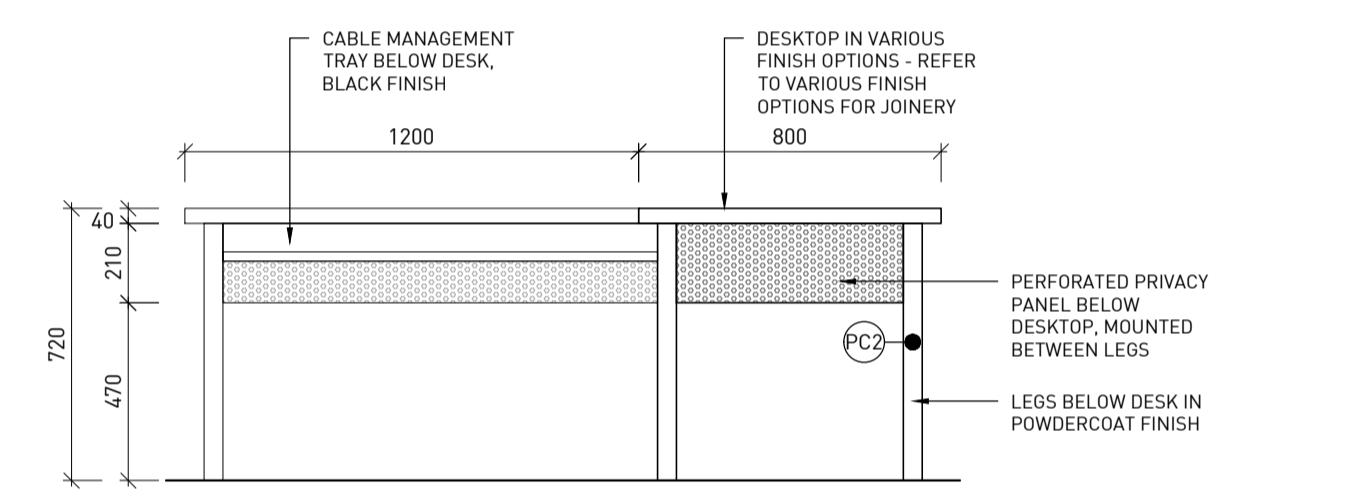
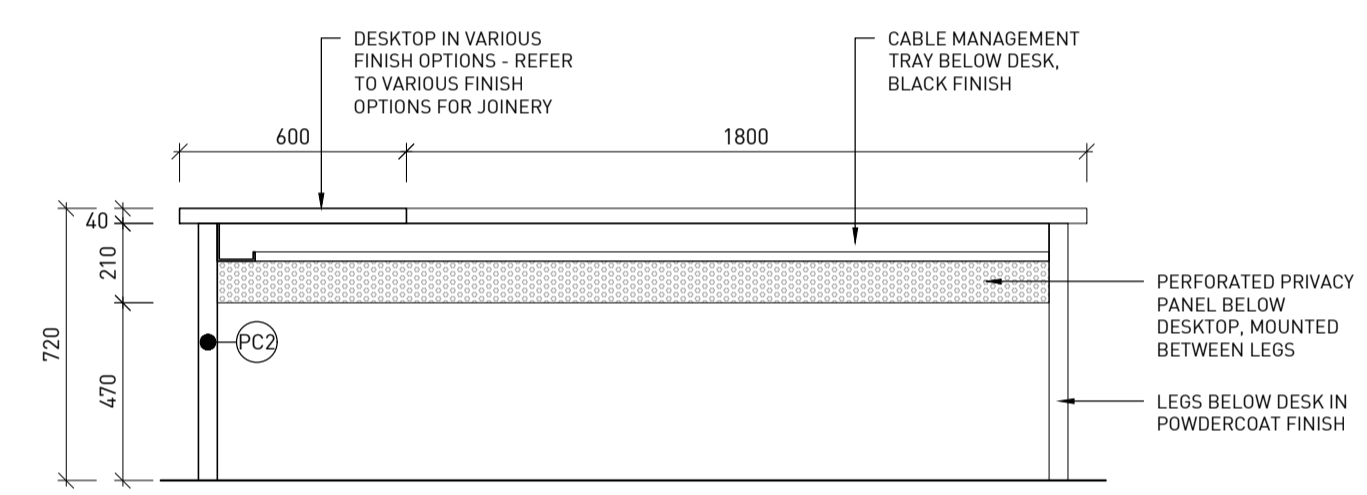
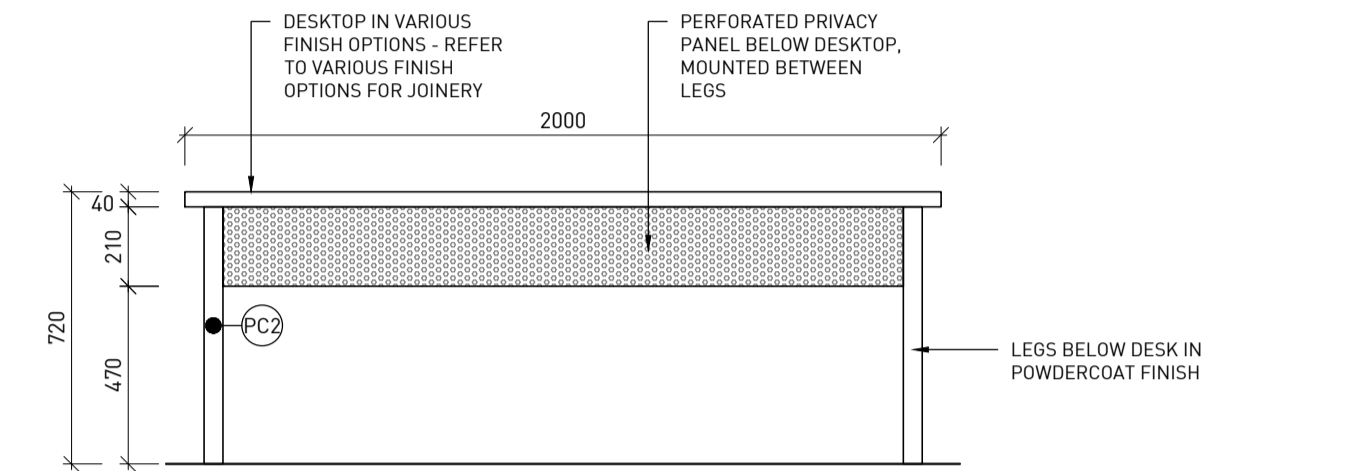
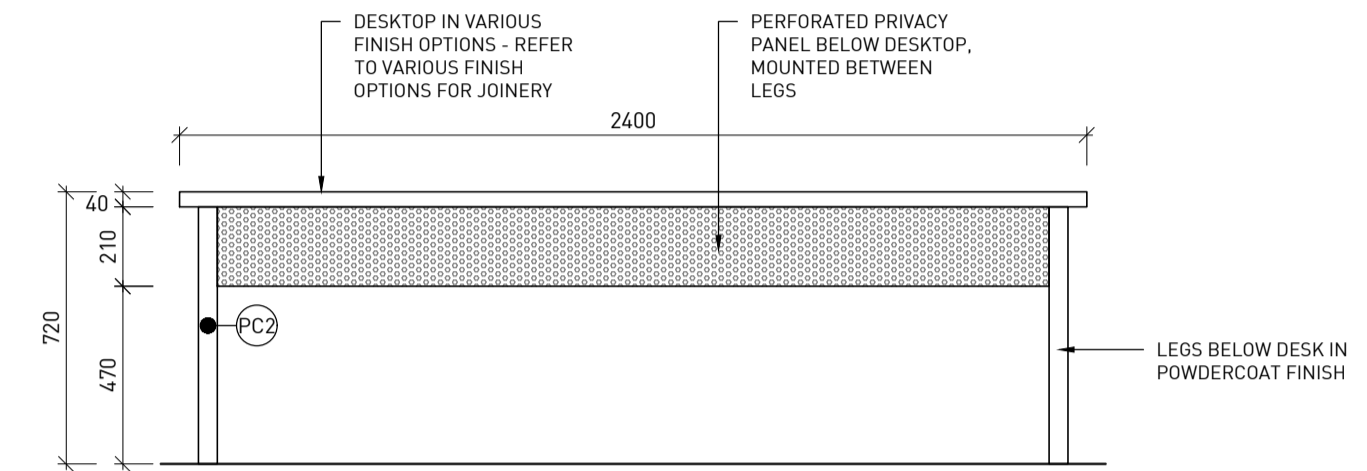
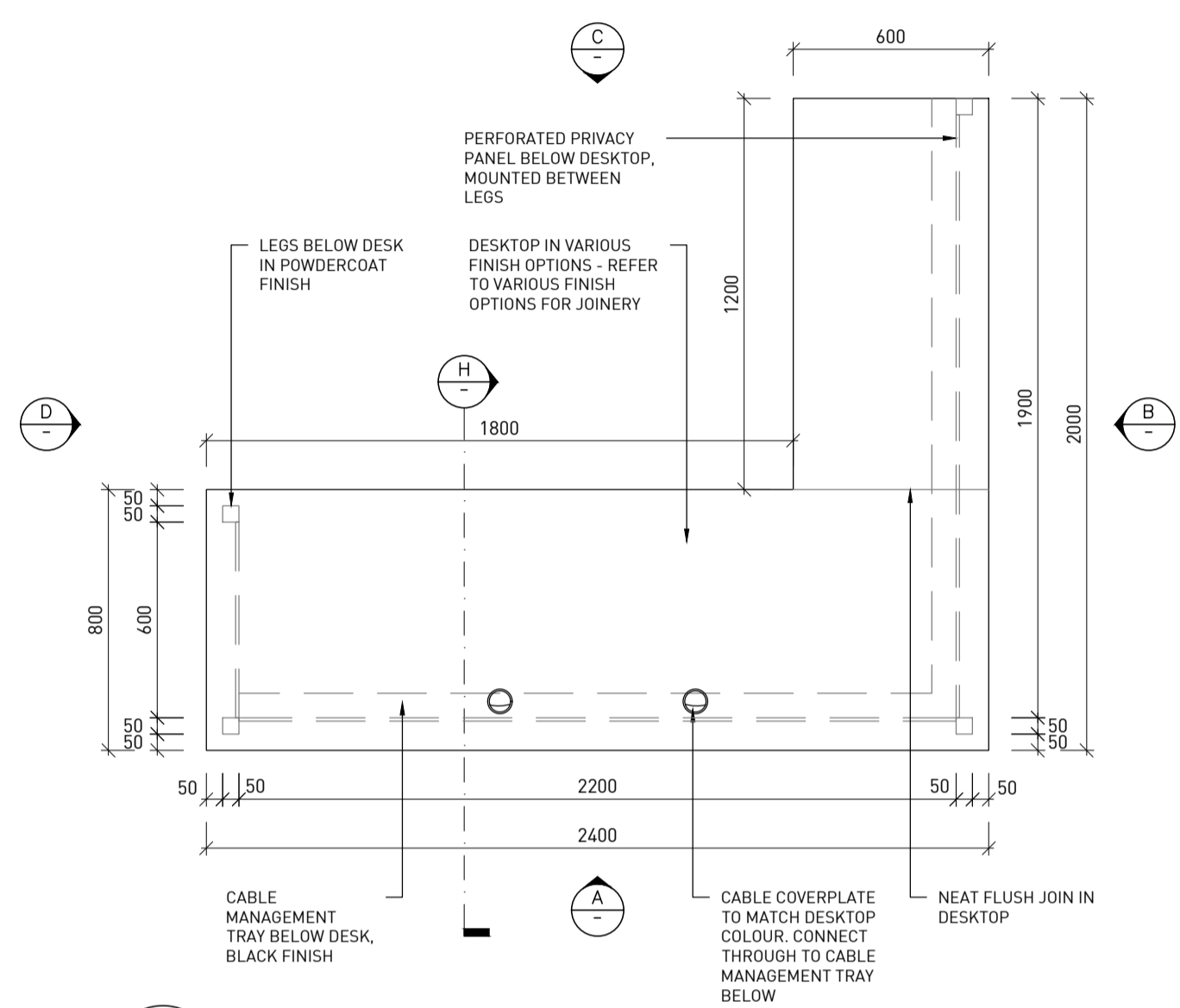
sydney melbourne brisbane perth
san francisco seattle dubai

copyright
these drawings and design concepts remain the property of incorp property solutions group pty ltd and may not be reproduced whole or in part without the expressed permission of incorp.

note: all site measurements and services shall be checked prior to fabrication and/or construction. incorp shall be notified of any discrepancies on site. do not scale dimensions directly from drawings.

the contractor is to verify existing site conditions. the contractor is to check fixings to existing substrates prior to commencing work. the contractor is to install materials on site to manufacturer's recommendation. the contractor is to co-ordinate with all other trades on site. if any notation or dimensioning is unclear or conflicting, the contractor must first clarify with incorp before pricing, manufacturing or installing.

issue	rev	description	date
A		ISSUED FOR TENDER	03.02.20



**CONTRACTOR TO
SUPPLY SHOP
DRAWINGS**

sheet status: **TENDER**

scale: VARY @ A1 date: 31.01.2020

design: CJ drawn: CJ

project no: **M20-0009**

client: **BARRISTERS' CHAMBERS LIMITED**

site: LEVEL 16 & 17
460 LONSDALE STREET
MELBOURNE VIC 3000

drawing title: **CHAMBER
C07 & C08 JOINERY DETAILS**

drawing no: **A0-10.4** issue: **A**